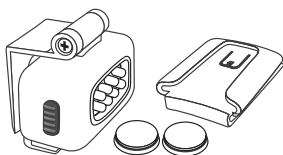


All-Purpose Swivel Light

Package Contents:

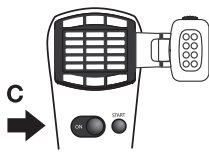
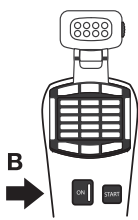
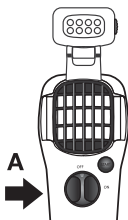
- All-Purpose Swivel Light
- Clip Attachment
- (2) CR-2032 Lithium Batteries



Attaching to ThermaCELL Appliance:

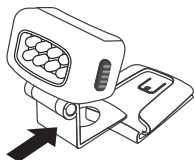
- 1) Make sure Appliance is OFF.
- 2) Insert base of All-Purpose Swivel Light above (or on side of) your Appliance's grill.*

**ATTENTION: For Appliance models A and B (see illustrations below), attach All-Purpose Swivel Light to top of grill. For Appliance model C, attach to side of grill.*



Attaching to Other Objects:

- 1) Slide base of All-Purpose Swivel Light into open slot on top of Clip Attachment. You will hear a click when securely attached.
- 2) Secure Clip Attachment to your hat, belt, or other object.



All-Purpose Swivel Light Adjustment

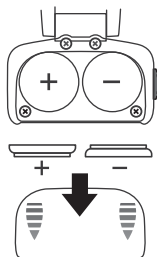
If head on ThermaCELL All-Purpose Swivel Light becomes loose (does not stay in place), please turn hinge screw for desired tightness. For location of hinge screw, see light illustration in "Package Contents".

All-Purpose Swivel Light Operation:

Slide power switch located on side of light UP for white light (4 LEDs) and DOWN for green light (4 LEDs). This light operates in white OR green light; white and green lights cannot be illuminated at same time.

Battery Installation/Replacement:

- 1) Locate battery cover on bottom of light.
- 2) Remove clear plastic insert from battery compartment (only for first time use).
- 3) Press firmly and slide battery cover open.
- 4) Place one battery on each side with open battery compartment facing you. Left side: positive (+) up; Right side: negative (-) up.
- 5) Replace battery cover by sliding until secure.



ThermaCELL Limited Warranty: The ThermaCELL All-Purpose Swivel Light is guaranteed to last one year from date of purchase. ThermaCELL will repair or replace, at our option, any ThermaCELL product that does not perform to your satisfaction. This is a limited warranty and excludes abuse (will be determined by ThermaCELL) and batteries. Please return defective product, and receipt of purchase to:

The Schawbel Corporation
26 Crosby Drive
Bedford, MA 01730